





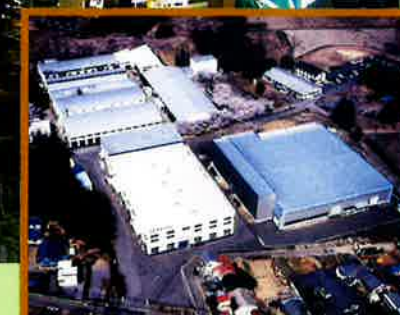
Odate Factory



Kitakata Factory



Fujioka Factory



The growing process of NLI is the history of development of Japanese packing industry.
Leader of automatic bag making machine and packing machine.

In a field of Packing industries in Japan, NLI has been contributing for the development of automatic bag making machine, automatic packing machine in a field of Food, Feed, Cementing plant, Petrochemical Plant, Paper Plant and other packing requirements which have been remarkably expanding its market in the last 68 years.

NLI was founded in 1941 by Mr.Yuzaburo Cho, founder, as "Cho Sewing Machine firm" in Tokyo, Japan.

Since 1941, the company started its business as a manufacture of Automatic sewing machine, and expanded its products range for Automatic heavy duty bag making plant.

In 1960 age, NLI developed Automatic bag making and packing machine as a pioneer of the industry, and exploded paper bag & polyethylene bag products market in Japan.

NLI shared more than 85% of Japanese domestic market for the above field and has been exporting our products more that 100 countries in overseas market.

Our advanced technology and excellent skill for manufacturing precise machine will be satisfied by our customers in the world.

Our concern on higher quality control technology for value added products.



NLI Fujioka Factory has adopted ISO 9001 to be certified its quality control technology for Industrial Sewing Machine and relative products.

Direct Communication with customers is our business philosophy!

Entering in New Era, 21 century, We NewLong Industrial Co., Ltd. Premises with our customer that we give the highest priority of our activity for the contribution to our clients.

Our mission is to take the quickest response and provide the best effort price with our excellent technology to meet customer's requirements.

I recognize that the most important way to attain the above is to make direct communication with our customer and to create new long-term business relationship toward the future.



Yasuyuki Cho
Yasuyuki Cho, President

A company profile

Company Name: NewLong Industrial Company Limited

Registered office Address: 8-14, Shiratori, 4-chome, Katsushika-ku, Tokyo, 125-0063, Japan

TEL 81-3-3603-2284 FAX 81-3-3603-2253

URL <http://nlwww.com/> E-mail info@nlwww.com

Paid-in Capital: ¥100 million

Factory: Fujioka factory (Fujioka NewLong Industrial K.K.)

Address: 4254, Fujioka, Fujioka-machi, Tochigi-shi, Tochigi-ken, 323-1104, Japan

Factory: Odate factory (Odate NewLong Industrial K.K.)

Address: 8-8, Niida-Hanuki-yachi, Odate-city, Akita, 018-5751, Japan

Factory: Kitakata factory (Kitakata NewLong Industrial K.K.)

Address: 997-1, Takadota-aza-menda, Toyokawa-machi, Kitakata-city, Fukushima, 966-0911, Japan

Factory: Koide factory (Koide NewLong Industrial K.K.)

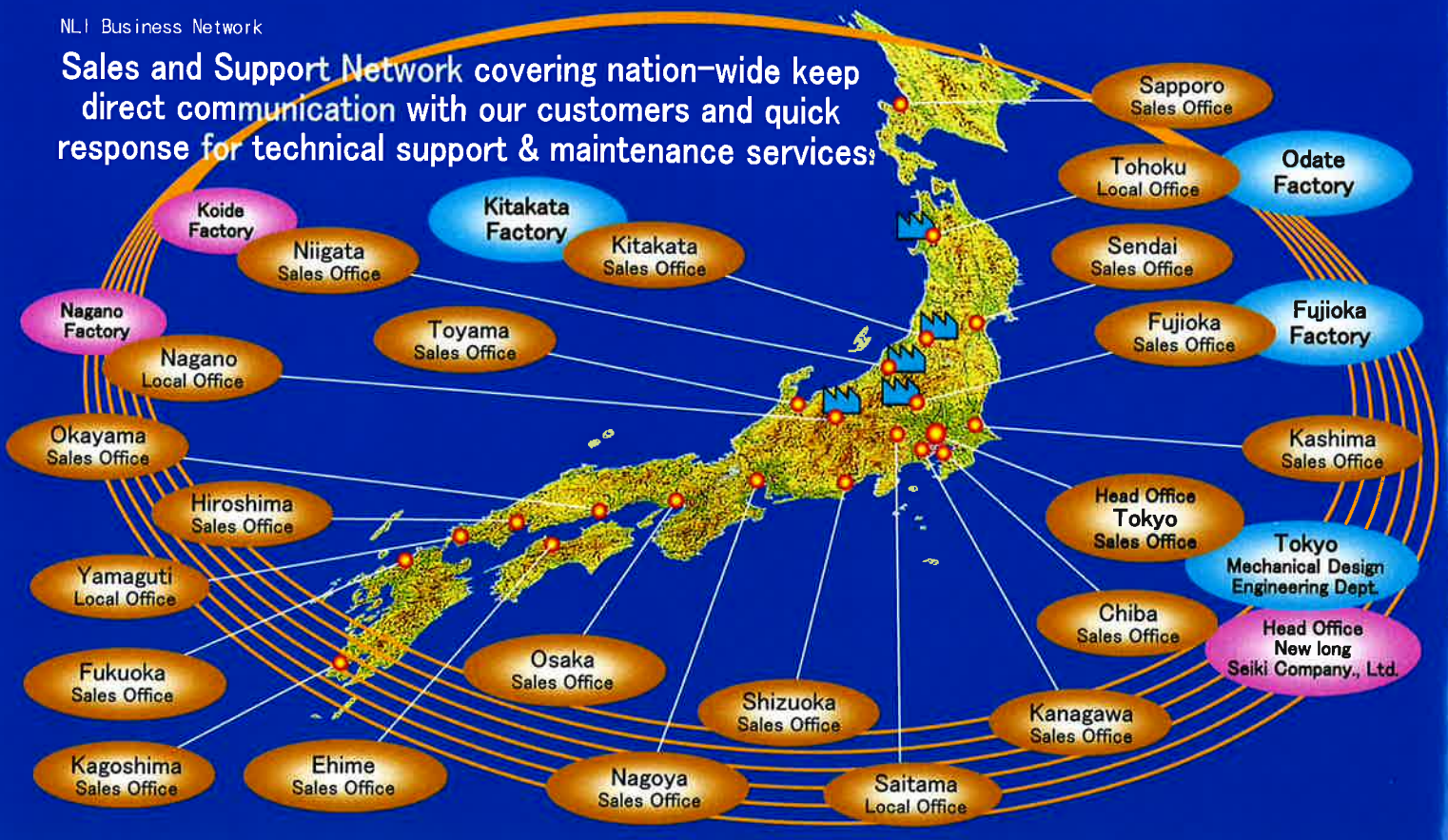
Factory: Nagano factory (Nagano NewLong Precise Machine K.K.)

Referenced Bank: UFJ

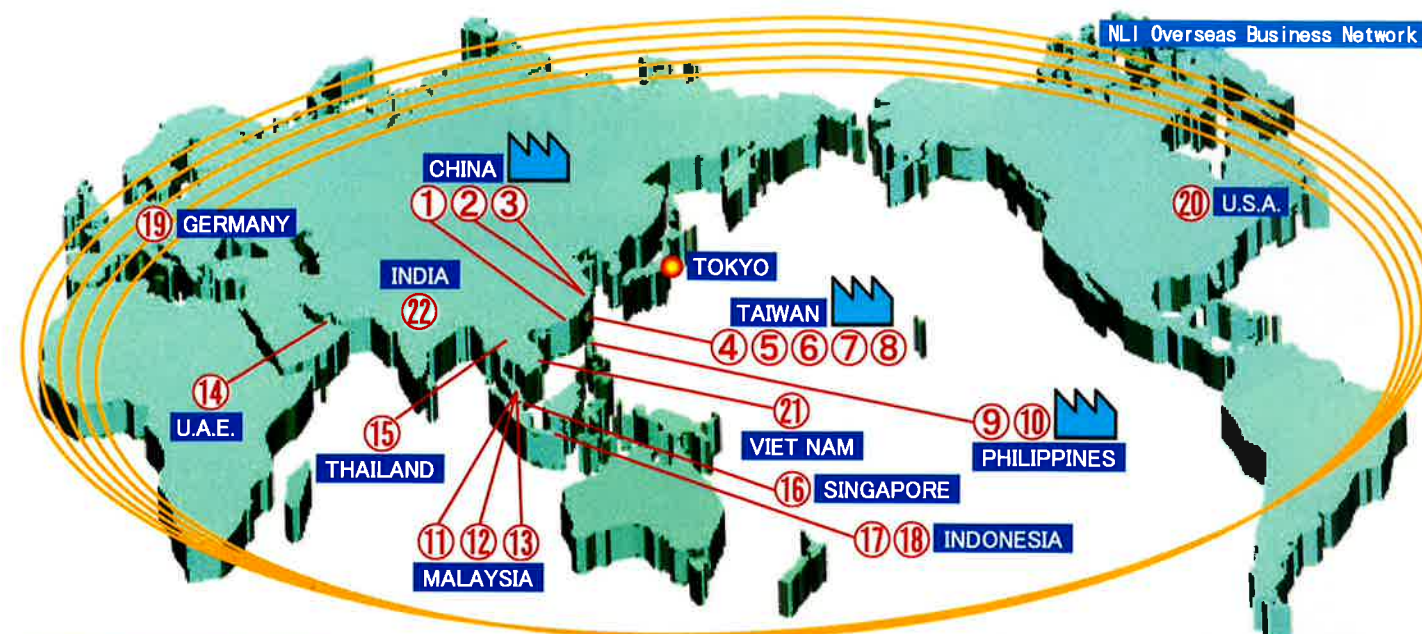
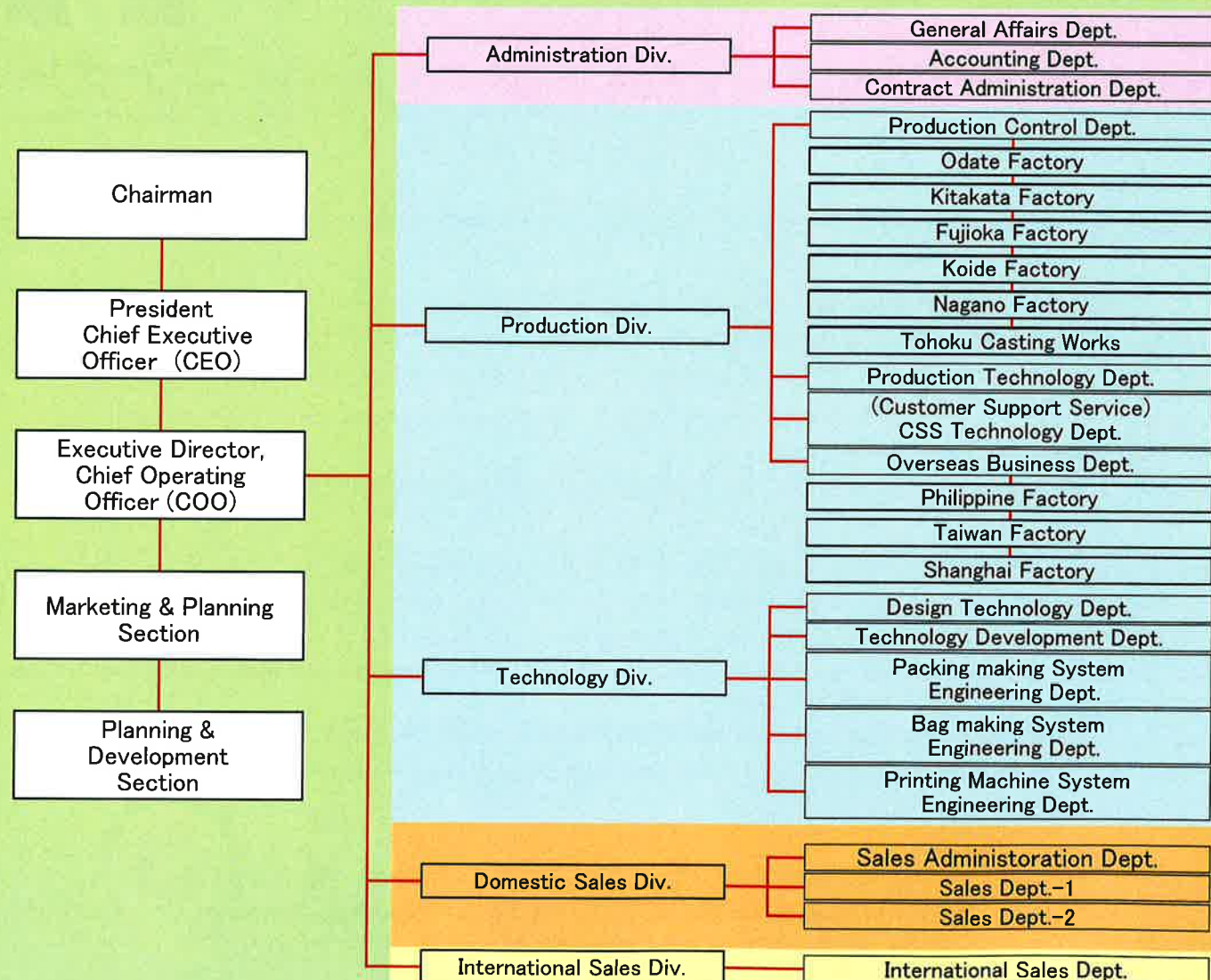
History:

- March, 1941** —Founded "Cho Sewing machine Firm" by Mr.Yuzaburo Cho
- September, 1956** —Divided manufacturing organization (NewLong Industrial Co., Ltd.) and sales organization (NewLong Co., Ltd.), Ltd. In September, 1956
- April, 2002** —Ruptured two organizations and started NLI new Direct Sales system.

Sales and Support Network covering nation-wide keep direct communication with our customers and quick response for technical support & maintenance services.

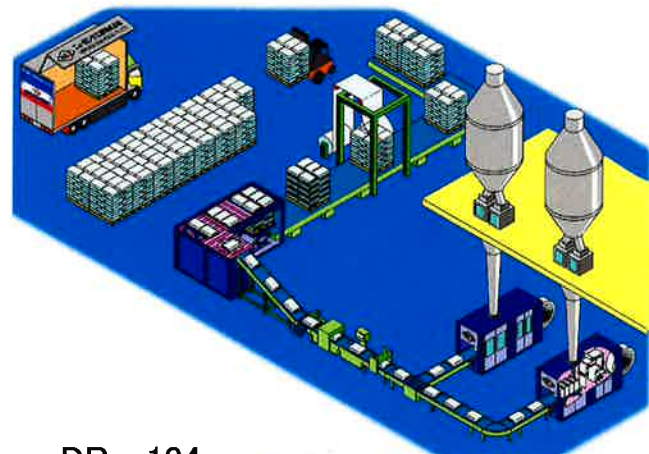


Organization Chart



CHINA	
①	紐朗工業亞洲有限公司 NLI INDUSTRIAL ASIA LIMITED Room 1904, 19/F., Tower 1, China Hong Kong City, 33 Canton Road, Kowloon, Hong Kong TEL+852-2735-0199 FAX+852-2735-0216 上海長欣包裝設備有限公司 SHANGHAI NEWLONG INDUSTRY CO., LTD Room 1304, Jiedi Mansion, No.2790 Zhongshan North Road, Shanghai 200063 P.R. China TEL+86-21-6374-4961 FAX+86-21-6374-7495 上海工場 NEWLONG INDUSTRIAL (SHANGHAI) CO., LTD. No. 3238, Huhang Road, Zhelin Town, Fengxian District, Shanghai 201424 P. R. China TEL+86-21-57515021/ +86-21-57515022 FAX+86-21-57515033
TAIWAN	
④	台灣長新開發工業股份有限公司 NEWLONG INDUSTRIAL TAIWAN BAGGING MACHINE CO., LTD. 6F., No.19, Sec. 3, Minsheng E. Rd., Zhongshan Dist., Taipei City 10478 Taiwan (R.O.C.) TEL+886-2-2503-2226 FAX+886-2-2503-2189 台灣長新開發工業股份有限公司 台中事務所 NEWLONG INDUSTRIAL TAIWAN BAGGING MACHINE CO., LTD. TAICHUNG BRANCH OFFICE 2F., No.706, Yongchun E. Rd., Nantun Dist., Taichung City 40877 Taiwan (R.O.C.) TEL+886-4-2386-2748 FAX+886-4-2386-2749 台灣長隆開發工業股份有限公司 NEWLONG INDUSTRIAL TAIWAN BAGGING EQUIPMENT CO., LTD. No. 96, Nanhe 1st Rd., Fengshan Dist., Kaohsiung City 83094 Taiwan (R.O.C.) TEL+886-7-796-2211 FAX+886-7-796-2266 台灣恩德愛股份有限公司 TAIWAN NLI BAG MAKING MACHINE CO., LTD. 19-1, Kung Chien Nang Road, Liutu Industrial Dist., Keelung 20647 Taiwan (R.O.C.) TEL+886-2-2451-1826 FAX+886-2-2452-4892 台灣長新股份有限公司 TAIWAN NEWLONG MACHINE WORKS, LTD. 19, Kung Chien Nang Road, Liutu Industrial Dist., Keelung 20647 Taiwan (R.O.C.) TEL+886-2-2451-1342 FAX+886-2-2451-5081
PHILIPPINES	
⑨	NEWLONG INDUSTRIES PHILS., INC. Newlong Compound, Malinis Street, United San Pedro Subdivision, Barangay San Antonio, City of San Pedro, Laguna 4023 Philippines TEL+63-2-868-10-83 FAX +63-2-868-10-85 PHILIPPINE NEWLONG CORPORATION 3590 Davila Street Newlong Building Barangay Santa Cruz, Makati City 1205 Philippines TEL+63-2-896-4876 FAX+63-2-896-2234

MALAYSIA	
⑪	NLI SUPPLIES & SERVICES (M) SDN. BHD. No. 21 & 21-01, Jalan Rosmerah 4/14, Taman Johor Jaya, Johor Bahru, Johor 81100 Malaysia TEL+60-7-355-4368 FAX +60-7-355-4369 NLI MACHINERY MALAYSIA SDN. BHD. No.9, Block A, Lot 756, Jalan Subang 3, Taman Perindustrian Subang, Subang Jaya, Selangor 47610 Malaysia TEL+60-3-8081-3346 FAX+60-3-8081-3395 NLI MM PENANG BRANCH No.5 Jln Cengal 1.Tmn Industri Cengal, Butterworth H.P.Pinang. 13400 Malaysia TEL+60-4-314-0808 FAX +60-4-314-0909
U.A.E.	
⑭	NEWLONG INDUSTRIAL FZC Warehouse Q3-123, Saif Zone, P.O.Box 120127, Sharjah United Arab Emirates (U.A.E.) TEL+971-6-5529216 FAX+971-6-5529217
THAILAND	
⑮	NEWLONG INDUSTRIAL GROUP CO., LTD. 120/35 Moo 12 T. Rachataewa, A. Bangplee, Samutprakarn, 1054 Thailand TEL+66-2312-4634/ +66-2750-4172-3 FAX+66-2750-4366
SINGAPORE	
⑯	NLI SINGAPORE PTE. LTD. 18 Boon Lay Way, #02-118 Tradehub 21, 609966 Singapore TEL+65-6686-4436 FAX+65-6686-4437
INDONESIA	
⑰	PT NL INDUSTRIAL INDONESIA Gedung #404 A, Kawasan Komersial Cilandak, Jalan Raya Cilandak KKO, Kel. Cilandak Timur, Kec. Pasar Minggu, Jakarta Selatan 12560 Indonesia TEL+62-21-7800784/ +62-21-22978852 FAX+62-21-7800743 PT. NLI MACHINERY INDONESIA Ruko Graha Angrek Mas Blok A 51 Rt 49 Rw 12 Ds. Pagerwojo Kec. Buduran, Kab. Sidoarjo, Sidoarjo - Jawa Timur 61252 Indonesia TEL+62-31-9971-0509 FAX+62-31-9971-0509
GERMANY	
⑲	Kochsieck & NLI GmbH Bunsenstr. 24, 32052 Herford, Germany Phone +49-5221-9946-223 Fax+49-5221-9946-226
U.S.A.	
⑳	NLI CHICAGO INC. 1600 Golf Road, Suite 1200, Rolling Meadows, Illinois (IL) 60008 U.S.A. TEL+1-847-981-5115 FAX+1-847-981-5006
VIET NAM	
㉑	NEWLONG INDUSTRIAL VIET NAM COMPANY LIMITED 56/10 Tan Thoi Nhat 08 Street, Tan Thoi Nhat Ward, District 12, Ho Chi Minh City 700000 Vietnam TEL +84-8-38-833-877 FAX +84-8-38-833-588
INDIA	
㉒	NLI Packaging Machines Private Limited Unit No.11, Ground Floor, DLF Star Tower, Sector 30, NH-8, Gurugram, Haryana 122003, India TEL +91-124-478-6879 FAX +91-124-478-6879



Automatic Packaging Machine system

from order made machine to mass production machine

DP-104



IMS



FG-B



6CM-P



3CM-3



FG-C2



3CM-3G/5G

A1-PB+CM4900-3



HS



3CM-5



NLAP-1



A2-B

A2-B2L



KS-1



PBS-3W



3CM-5B



3CM-P



3CM-PS



EFS-22



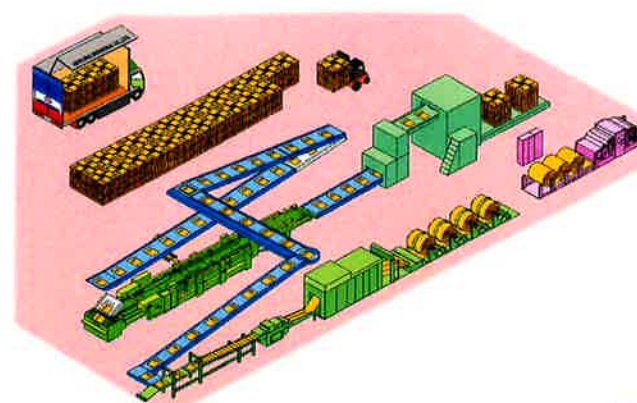
3CM-5X-1



3CM-52



3CM-PDS



Automatic bag making & Printing plant

from transportation, Tuber, sewing & printing process, to Palletizing & Film wrapping process



TS3636FH-SS



205GW



15M



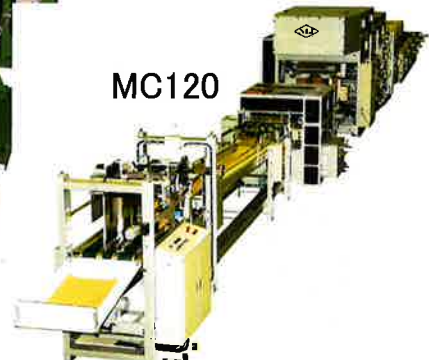
TS2746FH



185T



130T+505TH



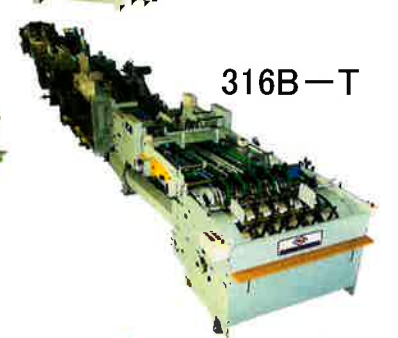
MC120



TS3636H



TS2755H



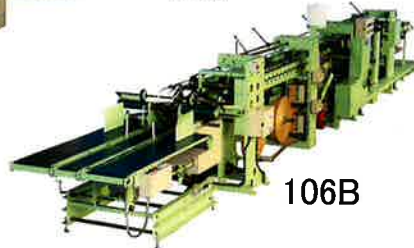
316B-T



FK412+19R-5



9314K-ON



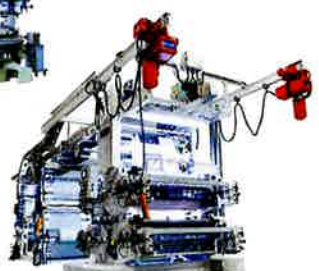
106B



KBS-W



BM5216



FCG412+19R-5



FZ400

Automatic Sewing Machine

High quality automatic sewing machine
to meet customers requirements



NLI Fujioka Factory has adopted ISO 9001 to be certified its quality control technology for Industrial Sewing Machine and relative products.

Bag Closing Sewing Head



DS-11



DS-9



DS-7



DS-6



DS-C



DS-2 II

Bag Making Sewing Head



DS-5 II



DN-5U



DN-2HS



DN-2W



DKN-1



HR-4N

Special Sewing Head



DR-3A



DHR-6



HR-2A



DR-7UW



DD-5



HR-4A

Portable Bag Closer



DKN-3BPGP



DKN-3WGP



NP-3 II



NP-7A



NP-8



NEWLONG INDUSTRIAL CO., LTD.

8-14, Shiratori 4-chome, Katsushika-ku, Tokyo 125-0063, Japan

Tokyo Head Office

PHONE +81-3-3603-2276 FAX +81-3-3603-2253

Mechanical Design Engineering Dept

PHONE +81-3-3603-2252 FAX +81-3-3602-2694

URL <https://nlwww.com/>
E-mail info@nlwww.com